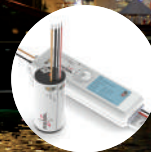




BITS2POWER

ADVANCED LIGHTING CONTROL

- only two wires to install
- power and light management over the same two wires
- two way communication



SYSTEM SETUP



Contact Information
bits2power
info@bits2power.com
www.bits2power.com

RENA Electronica
De Ambachten 12, 4881 XZ Zundert, The Netherlands
+31 (0)76 599 599 5
www.rena.nl



The Bits2Power control system has been developed to create a seamless integration between lighting, building management and entertainment systems. With Bits2Power lighting can be dimmed stepless and smoothly, even down to the last 10%. Upto 4 colours (RGBW) can be fully controlled and each light point is addressed individually.

As input signals DMX/RDM, DALI and Ethernet can be applied. With the output signal LEDs, Halogen, 0-10V and compact fluorescent can be controlled.

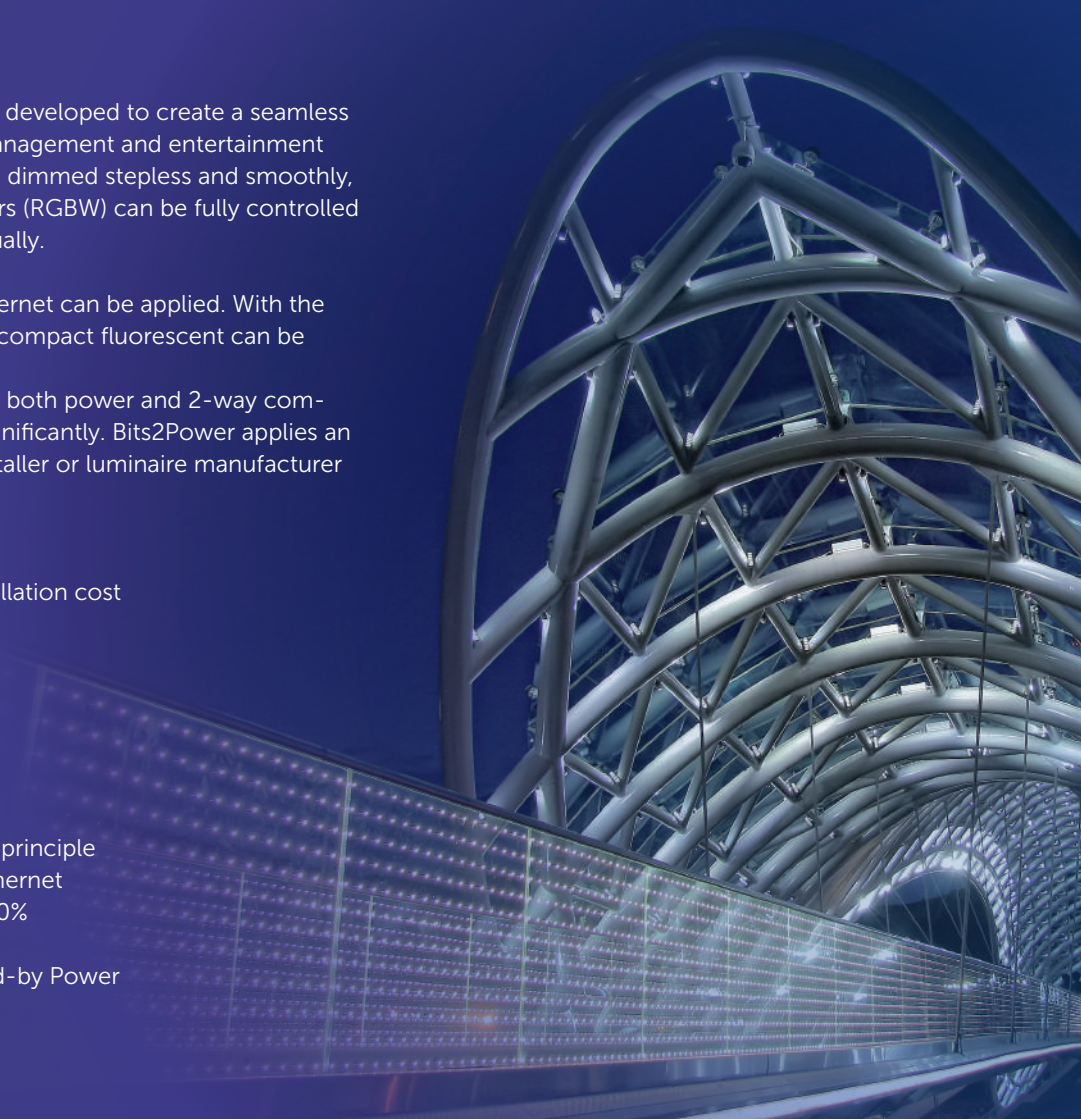
Each light point only needs two wires for both power and 2-way communication, reducing installation cost significantly. Bits2Power applies an open protocol any system integrator, installer or luminaire manufacturer can use.

MAIN BENEFITS

- Easy installation, low wiring & installation cost
- Widely applicable
- Superior light effect
- Energy saving solution
- Bridging long distances
- Safe installation and use

KEY FEATURES

- Installation based on '2 wires only' principle
- Input signal DALI, DMX/RDM or Ethernet
- LED smoothly dimmable down to 0%
- Drivers individually addressable
- 95% Energy Efficiency & Low Stand-by Power
- Safe 48V output signal





POWER DATA CONTROLLER

The heart of each Bits2Power system is the Power Data Controller (PDC). It is a combined power and communication unit. Each PDC will be equipped with a protocol key of choice and can handle upto 96 single addresses and 64 drivers. For large installations several Power Data Controllers are connected by applying the daisy chain principle on the protocol keys.

SPECIFICATIONS POWER DATA CONTROLLERS

| Characteristics | Values |
|-------------------------------|--------------|
| DC output voltage | 48V |
| Rated current | 12.5A |
| Rated power | 600W |
| AC input voltage range | 85-264V |
| Power Efficiency | Up to 90% |
| Standby power | 1.7W |
| Maximum operating temperature | -5°C/+40°C |
| IP rating | IP20 |
| Weight | 3.1 kg |
| Dimension (l x w x h) in mm | 350x137x93mm |



PROTOCOL KEY

Each system can be tailored with the preferred protocol through specific protocol keys. Available are DMX/RDM, DALI, Ethernet and a Service key.

SPECIFICATIONS DALI PROTOCOL KEY

| Characteristics | Values |
|-----------------------------|------------------|
| DC output voltage | max. 44V |
| DC output current | 2mA |
| Max. operating temperature | -5 °C / +40 °C |
| IP rating | IP20 |
| Weight | 0.1 kg |
| Dimension (l x w x h) in mm | 115 x 76 x 38 mm |

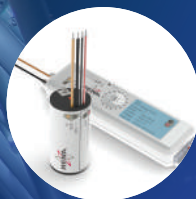


KEYPAD

The Bits2power system can be extended with a keypad. While having a multitude of protection features and IP20 rating, it can safely fit in standard wall sockets. Fronts labels are available with own designs.

SPECIFICATIONS KEYPAD

| Characteristics | Values |
|-----------------------------|---------------------|
| DC input voltage range | 24..48V |
| Input power | 1W |
| Max. operating temperature | -20 °C / +50 °C |
| IP rating | IP20 |
| Weight | 0.087 kg |
| Dimension (l x w x h) in mm | 91.8 x 91.8 x 26 mm |



DRIVERS

Bits2Power drivers are available for compact fluorescent, Halogen, 0-10V and LED sources. The LED-drivers are available from 1-channel (single colour) upto 4-channels (multi-colour). Each driver has a 16 position group address switch. Current drivers are available with an output current of 350, 500, 700, 1050, 1200, 1400mA. PWM drivers are available with an output voltage of 12, 24, 36 VDC.

SPECIFICATIONS LED DRIVERS 1-CHANNEL

| Characteristics | Values |
|-----------------------------|--------------------|
| DC output voltage range | 3..Uin -4V |
| Rated currents | 350/500/700/1050mA |
| Maximum power | 16W/22W/31W/46W |
| Number of LEDs | 1..12 |
| DC input voltage range | 24-48V (= Uin) |
| Minimal power efficiency | 92% |
| Standby power | <1mW |
| Max operating temperature | -20 °C / +50 °C |
| IP rating | IP67 |
| Weight | 0.17 kg |
| Dimension (l x w x h) in mm | 156 x 38 x 25 mm |